

DATE REVISED	DATE FILMED	DATE REVISED	DATE FILMED	FED. ROAD NO.	STATE	FED. AID PROJ.	FISCAL YEAR	SHEET NO.	TOTAL SHEETS
8-30-75	3673	3-07		6	ARK.	STATE			
				JOB NO.		9609		5	26
				5519 BR QUANT. 18142					

SCHEDULE OF BRIDGE QUANTITIES

BRIDGE NO	CODE NO	NAME PLATE TITLE	UNIT OF STRUCTURE	ITEM NO	801	SP # 802	SP # 802	803	804	805	806	SP # 807	SP # 808	809	812
				ITEM	UNCLASSIFIED EXCAVATION FOR STRUCTURES -BRIDGE	CLASS 5 CONCRETE	CLASS 5(AE) CONCRETE	BOILED LINSEED OIL	REINFORCING STEEL	STEEL BEARING PILING (HP10x42)	METAL (ALUMINUM) BRIDGE RAILING STRUCTURAL TYPE E (ALT.#1) METAL (STEEL) BRIDGE RAILING TYPE E (ALT.#2)	ELASTOMERIC BEARING PADS	PREFORMED JOINT SEALER	BRIDGE NAME PLATE (TYPE C1)	
				UNIT	CU YD.	CU YD.	CU YD.	GAL.	LB.	LIN. FT	LIN FT	LB.	LUMP SUM.	LIN FT	EACH
5519	1020	SPRING CREEK	END BENT NO. 1	59	24.34			0.2	1644	80		771	0.50		1
			INT BENT NOS 2 & 3	* 204	40.22				10619						
			END BENT NO. 4	59	24.34			0.2	1644	80		771	0.50		
			87'11" RC SLAB UNIT				228.20	10.5	66903		176	838		108	
TOTAL FOR 6-9 NO. 5519 & JOB NO. 9609				322	8890	228.20	10.9	80870	160	176	2380	1.0	108	1	

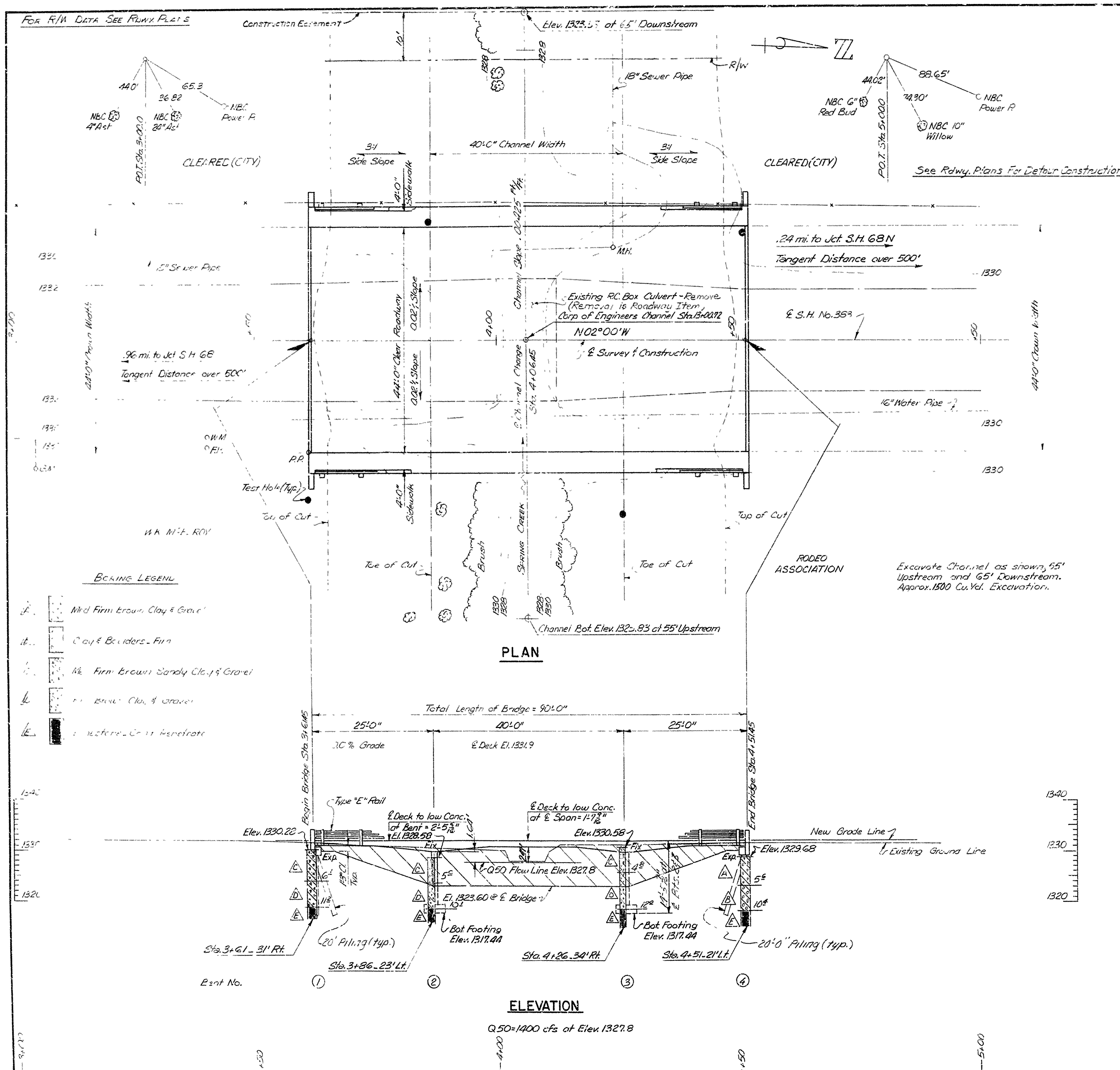
\* Includes Approx. 21 cu. yd of Rock Excavation

SCHEDULE OF BRIDGE QUANTITIES  
BRIDGE OVER SPRING CREEK  
SPRING CREEK BRIDGE (SPRINGDALE)  
WASHINGTON COUNTY  
ROUTE 383 SEC. 1  
ARKANSAS STATE HIGHWAY COMMISSION  
LITTLE ROCK, ARK.  
DRAWN BY: J.P.S. DATE: 3-20-75  
TRACED BY: DATE: 11-2-75  
CHECKED BY: J.P.S. DATE: 11-2-75  
SCALE: 1/2" = 1'-0"

BRIDGE ENGINEER

BRIDGE NO. 5519

DRAWING NO. 18142



DATE REVISION	DATE FILMED	DATE REVISION	DATE FILMED	NO. ROAD	STATE	FED. AID PROJ.	FY/CL Y.-R.	SHEET NO.	TOTAL SHEETS
				6	ARK.			8	26
								8	26

**GENERAL NOTES**

BENCH MARK - BRASS CAP SET IN CONCRETE MONUMENT 35' RIGHT STATION 4+31, ELEV. 1331.24.

FOOTINGS SHALL BE SET A MINIMUM OF 1'-0" INTO LIMESTONE. ROCK EXCAVATIONS SHALL BE MADE TO NEAT LINES OF CONCRETE FOOTINGS. CARE SHALL BE EXERCISED TO AVOID SHATTERING OF ROCK FACES BY EXCESSIVE BLASTING. CONCRETE IN FOOTINGS SHALL BE POURED DIRECTLY AGAINST EXCAVATED SURFACES OF ROCK.

ALL CONCRETE SHALL BE POURED IN THE DRY.

ALL PILING SHALL BE HP10X42 AND SHALL BE DRIVEN WITH AN APPROVED AIR, STEAM, OR DIESEL HAMMER TO A MINIMUM CAPACITY OF 55 TCNS PER PILE AND INTO THE MATERIAL DESIGNATED AS LIMESTONE ON THE BORING LOGS. LENGTHS OF PILING SHOWN ARE FOR ESTIMATING QUANTITIES ONLY. ORDER LENGTHS SHOWN: CUT-OFF OR BUILD-UP, IF NECESSARY, TO BE MADE FOR IN ACCORDANCE WITH THE STANDARD SPECIFICATIONS.

FOR DETAILS OF END BENTS, SEE DWG. NO. 18144  
FOR DETAILS OF INTERMEDIATE BENTS, SEE DWG. NO. 18145  
FOR DETAILS OF CONT. R. C. SLAB SPANS, SEE DWG. NOS. 18146 & 18147

SPECIFICATIONS: ARKANSAS STATE HIGHWAY COMMISSION STANDARD SPECIFICATIONS FOR HIGHWAY CONSTRUCTION, EDITION OF 1972, AND APPLICABLE STATE PROVISIONS.

DESIGN SPECIFICATIONS: AASHO 1949  
LIVE LOADING: HS20

UNIT STRESSES: CLASS S OR S(AE) CONCRETE (N=10) 1,200 PSI  
REINFORCING STEEL 20,000 PSI

LAYOUT OF  
BRIDGE OVER SPRING CREEK  
SPRING CREEK BRIDGE (SPRINGDALE)  
WASHINGTON COUNTY  
ROUTE 383 SEC.1  
ARKANSAS STATE HIGHWAY COMMISSION  
LITTLE ROCK, ARK.

DRAWN BY: K.M.G. DATE: 9 AUG. 72  
TRACED BY: DATE:  
CHECKED BY: F.H. DATE: 11-1-72

BRIDGE NO. 5519 DRAWING NO. 18143





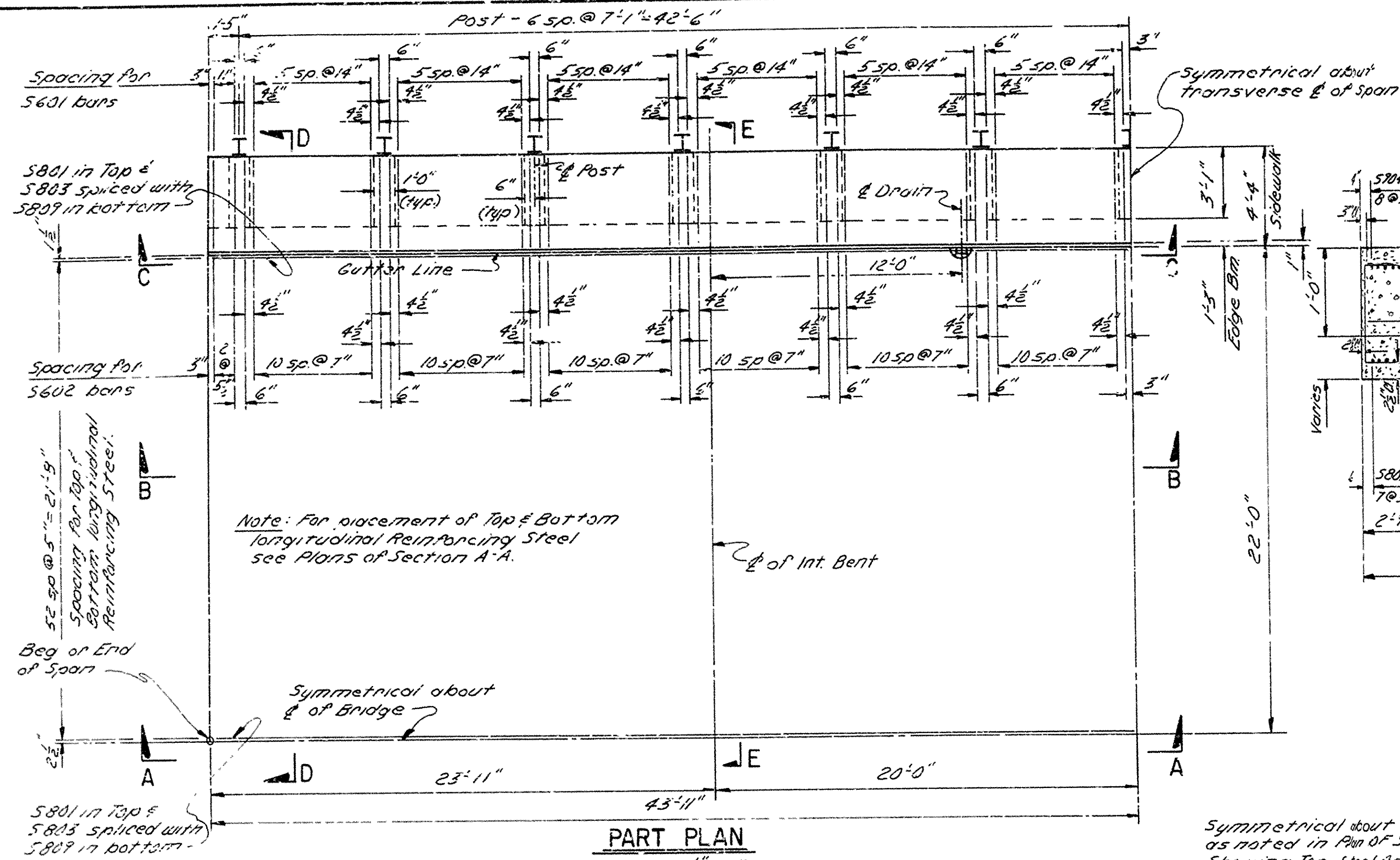






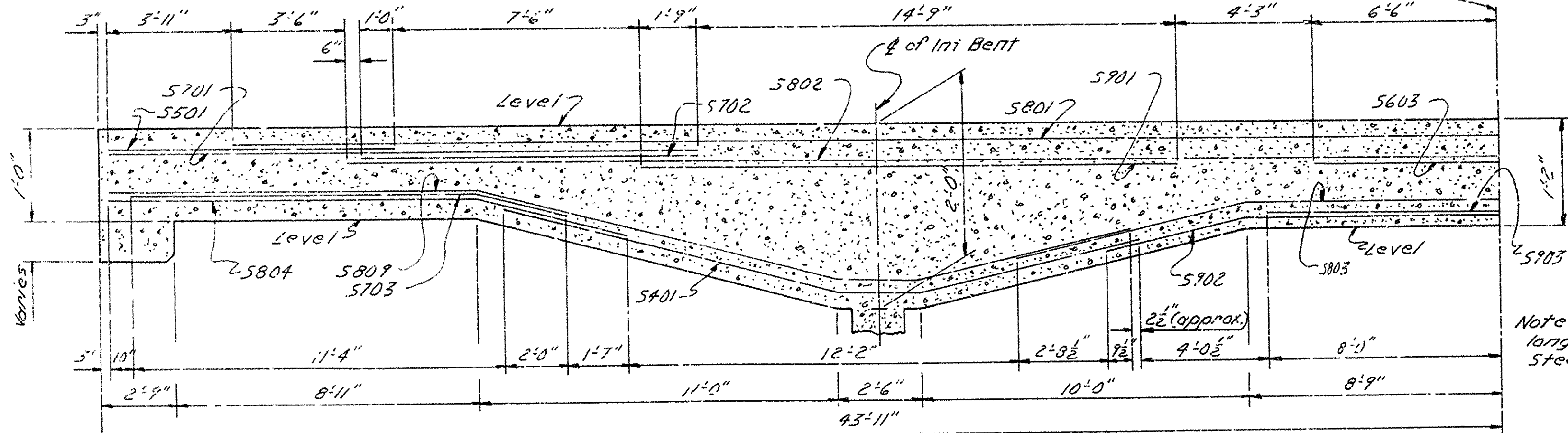
DATE REVISED	DATE FILMED	DATE REVISED	DATE FILMED	FED. ROAD NO.	STATE	FYD. AID PROJ.	FISCAL YEAR	SHEET NO.	TOTAL SHEETS
				6	ARK.	STATE		11	20
				JOB NO.	7609			11	20

5519 SLAB UNIT DETAILS 18146



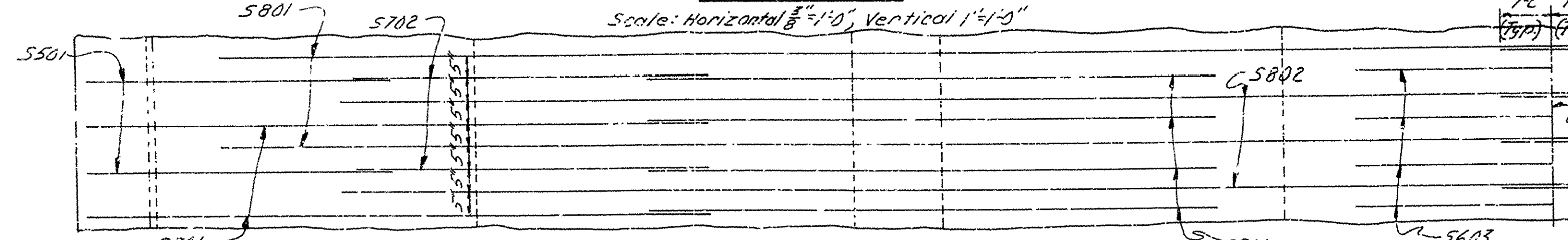
PART PLAN

Scale:  $\frac{1}{4}''=1'-0''$



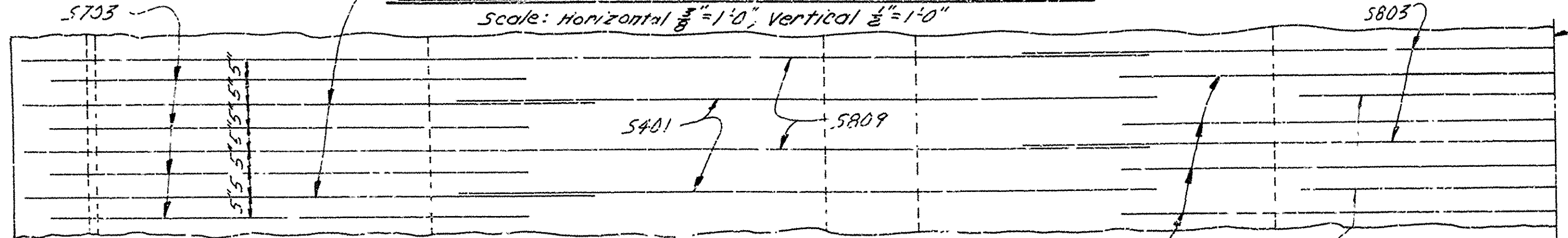
SECTION A-A

Scale: Horizontal  $\frac{1}{8}''=1'-0''$ , Vertical  $1''=1'-0''$



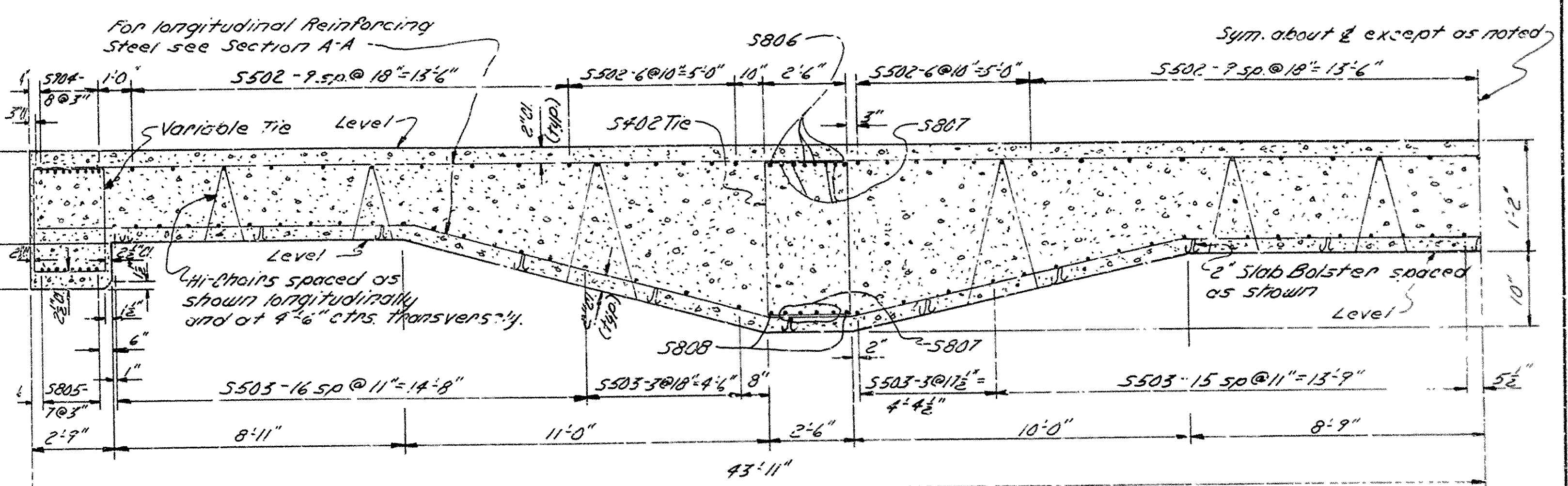
PLAN OF SECTION A-A SHOWING TOP STEEL ONLY

Scale: Horizontal  $\frac{1}{8}''=1'-0''$ , Vertical  $\frac{1}{2}''=1'-0''$



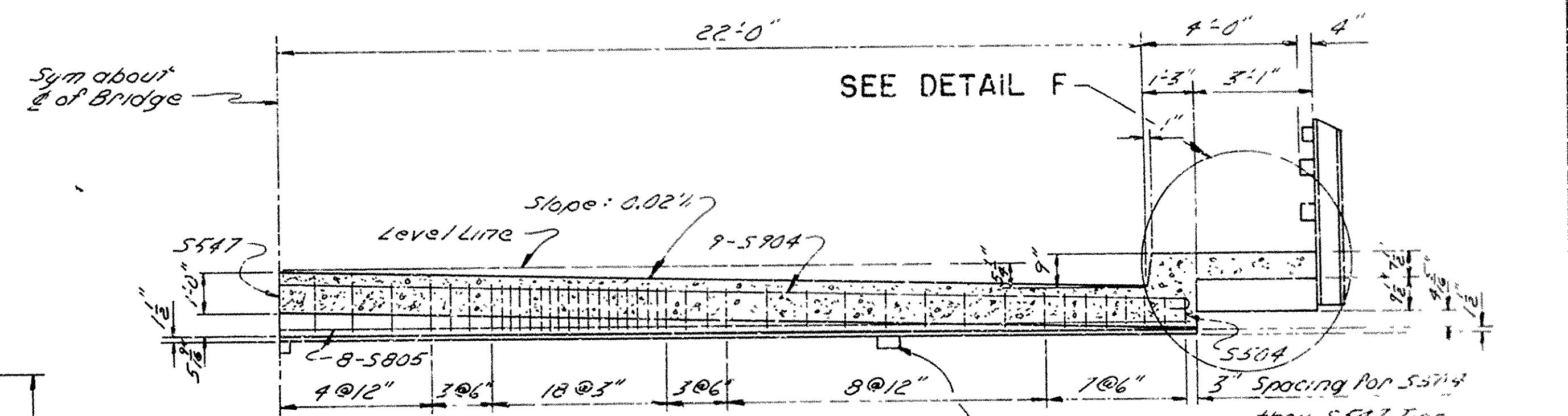
PLAN OF SECTION A-A SHOWING BOTTOM STEEL ONLY

Scale: Horizontal  $\frac{1}{8}''=1'-0''$ , Vertical  $\frac{1}{2}''=1'-0''$



SECTION B-B

Scale: Horizontal  $\frac{1}{8}''=1'-0''$ , Vertical  $1''=1'-0''$



SECTION D-D

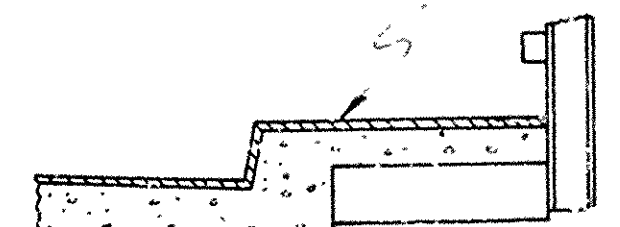
Scale:  $\frac{1}{8}''=1'-0''$

Note: Section A-A shows longitudinal Slab Reinforcing Steel only.

Note: For Section C-C, Section E-E, additional details & Notes and Bar List see Sheet 2 of 2.

IN GENERAL, ALL CONSTRUCTION JOINTS IN STRUCTURE SHALL BE HORIZONTAL AND SHALL BE PROVIDED WITH KEYS NOT LESS THAN 1-1/2" HIGH COVERING THE MIDDLE THIRD OF BOTH DIMENSIONS

Preformed Joint Sealer



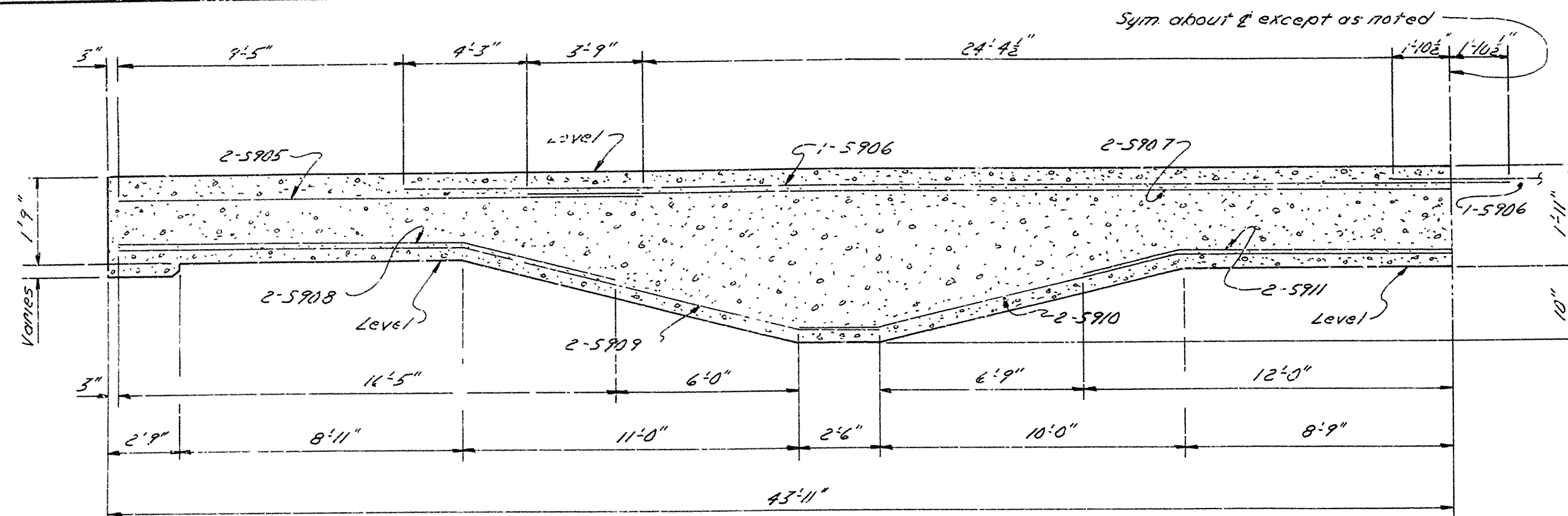
DETAIL F

Scale:  $\frac{1}{8}''=1'-0''$

SHEET 1 OF 2  
 DETAILS OF 87'-11"  
 CONTINUOUS R.C. SLAB UNIT  
 BRIDGE OVER SPRING CREEK  
 SPRING CREEK BRIDGE (SPRINGDALE)  
 WASHINGTON COUNTY  
 ROUTE 383 SEC. 1  
 ARKANSAS STATE HIGHWAY COMMISSION  
 LITTLE ROCK, ARK.  
 DRAWN BY: J.P.S. DATE: 2-8-73  
 TRACED BY: DATE: 2-8-73  
 CHECKED BY: DATE: 2-8-73  
 SCALE: as noted  
 BRIDGE NO. 5519 DRAWING NO. 18146

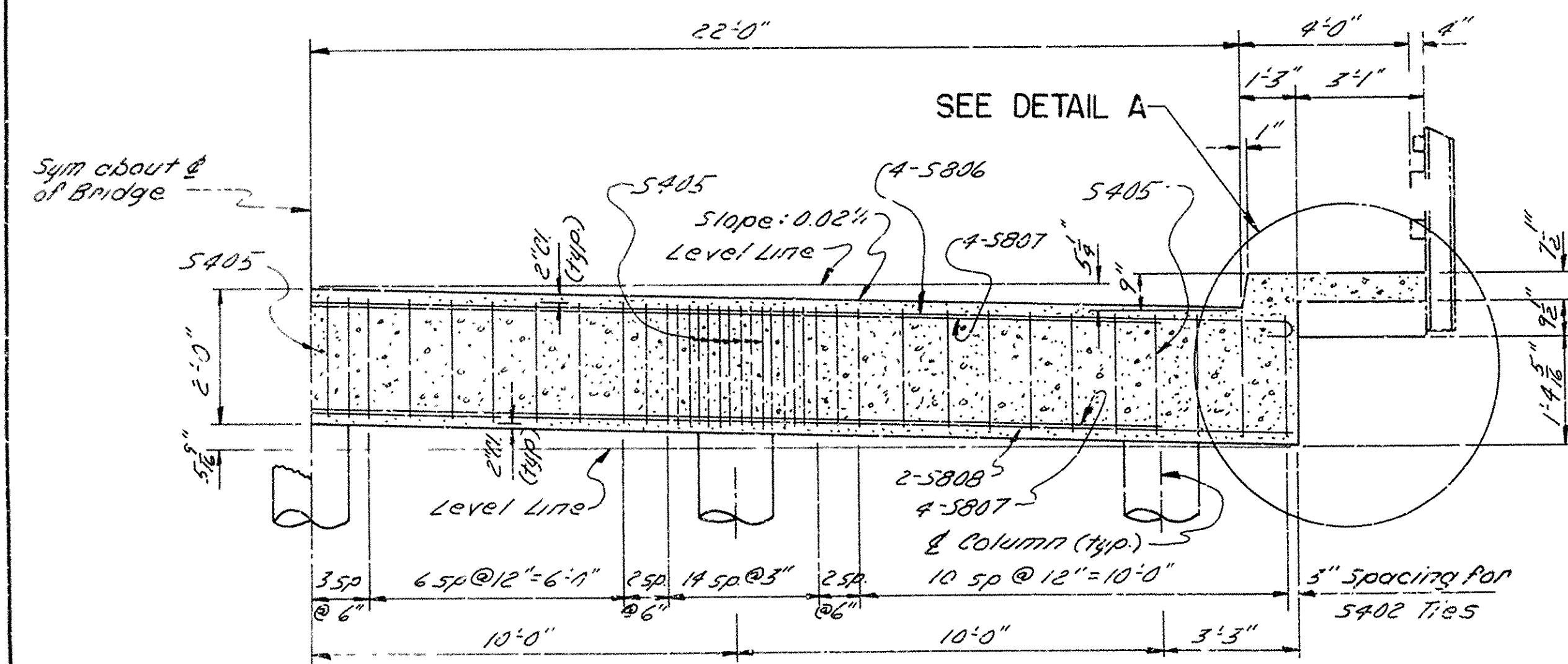


DATE REVISED	DATE FILMED	DATE REVISED	DATE FILMED	FED. ROAD NO.	STATE	FED. AID PROJ.	FY - AL YEAR	SHEET NO.	TOTAL SHEETS
				6	ARK.	STATE			
				JOB NO.	5519	SLAB UNIT DTL'S 18147	12	26	

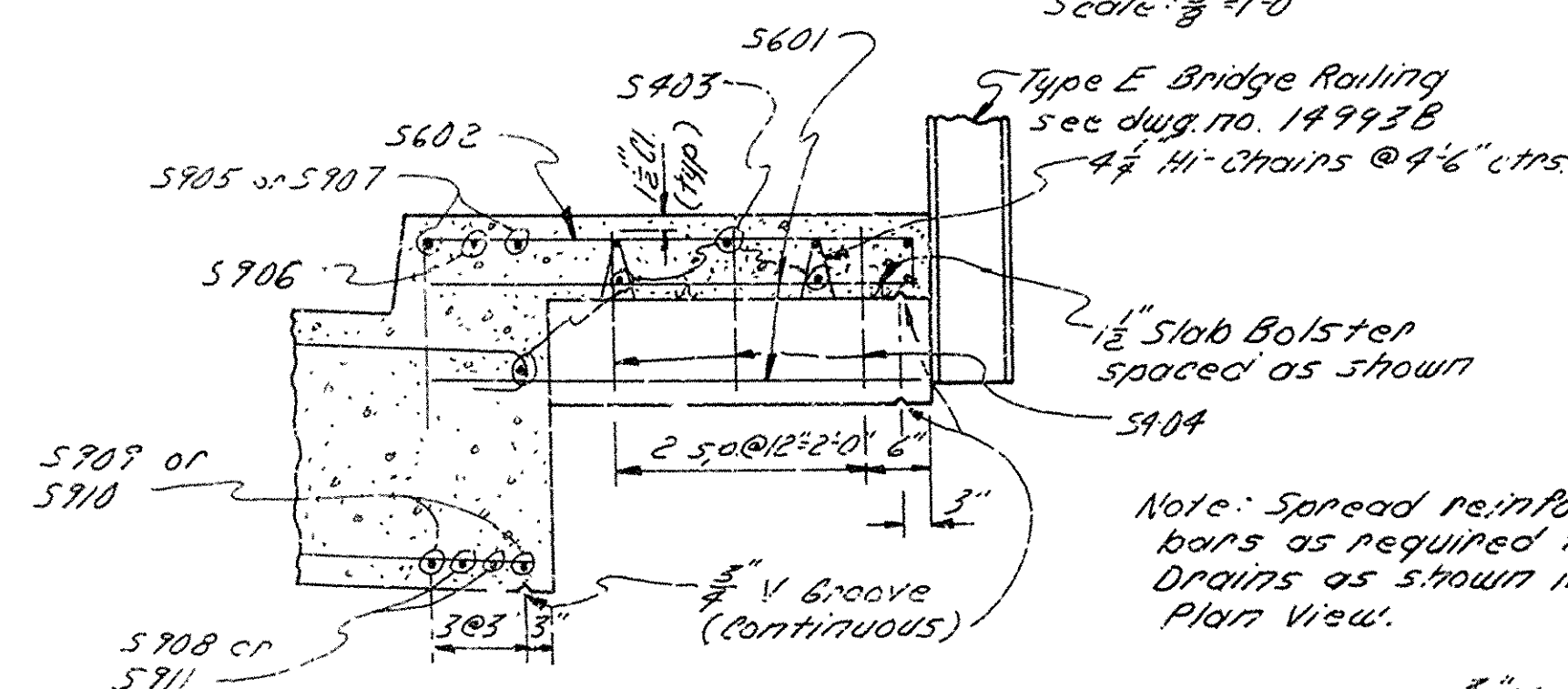


Note: Section C-C shows longitudinal Reinforcing Steel in Edge Beam only. For placement of longitudinal Reinforcing Steel see Detail A.

SECTION C-C  
No Scale



SECTION E-E  
Scale: 3/8" = 1'-0"



DETAIL A  
Scale: 1/2" = 1'-0"

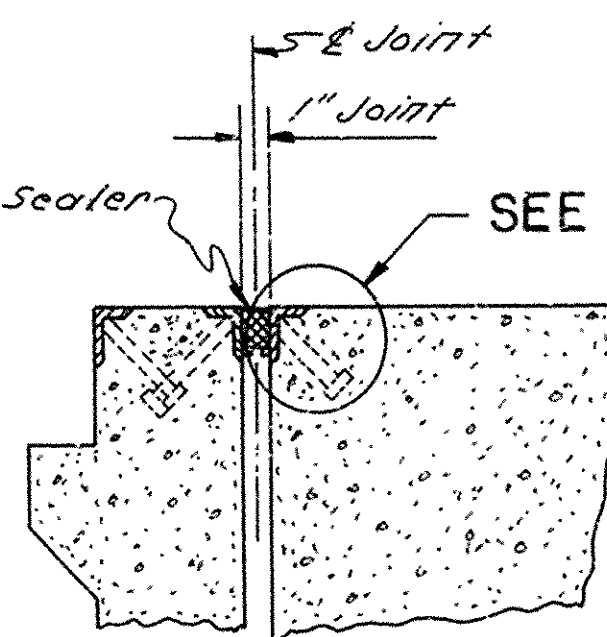
Note: Spread reinforcing bars as required to place Drains as shown in Plan View.

1/2" V Groove (Continuous)

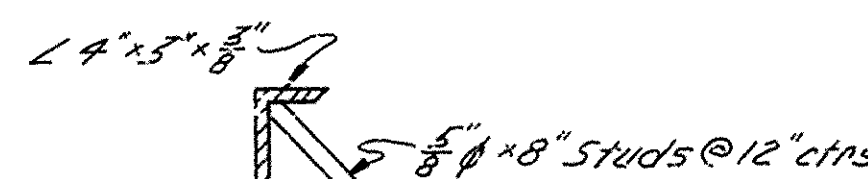
1/2" V Groove (Continuous)

DRAIN DETAIL  
No Scale

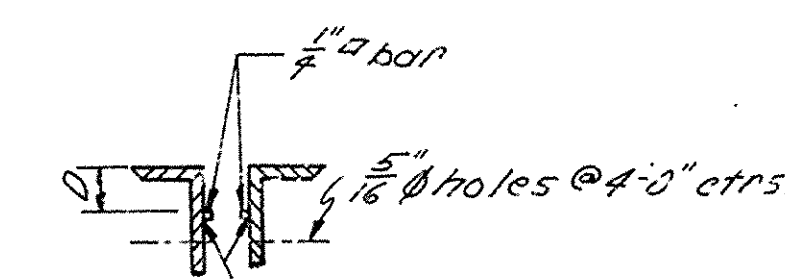
SEE DETAIL B



JOINT AT END BENT  
Scale: 3/8" = 1'-0"



DETAIL B  
Scale: 1/2" = 1'-0"



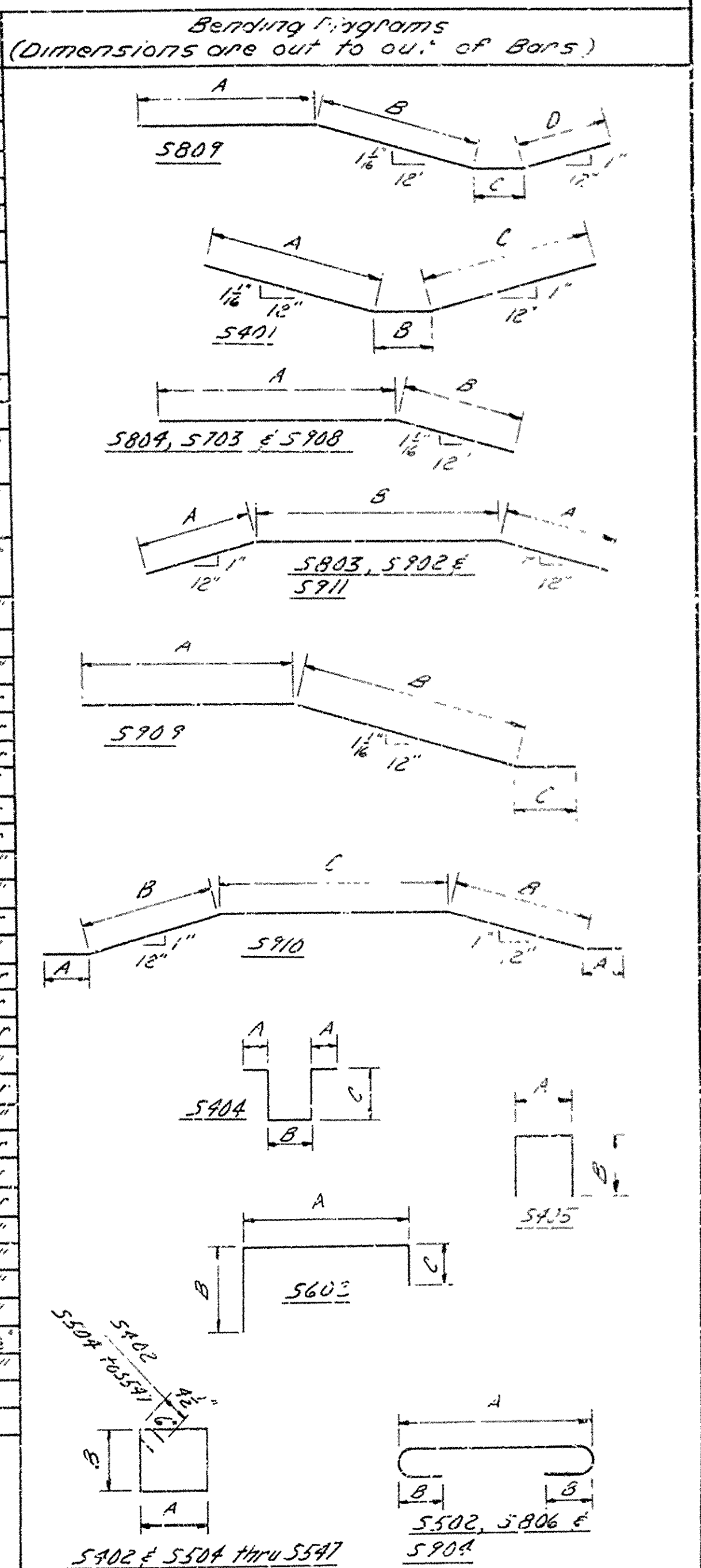
DETAIL OF JOINT  
SEAL SUPPORT  
Scale: 1/2" = 1'-0"

Note: The dimension D shall conform to the recommendations of the Seal Manufacturer as approved by the Bridge Engineer. The Depth of the Seal shall be approximately equal to the uncompressed width of the Seal. The Seal Width for 1" Joint = 1 1/2".

BAR LIST

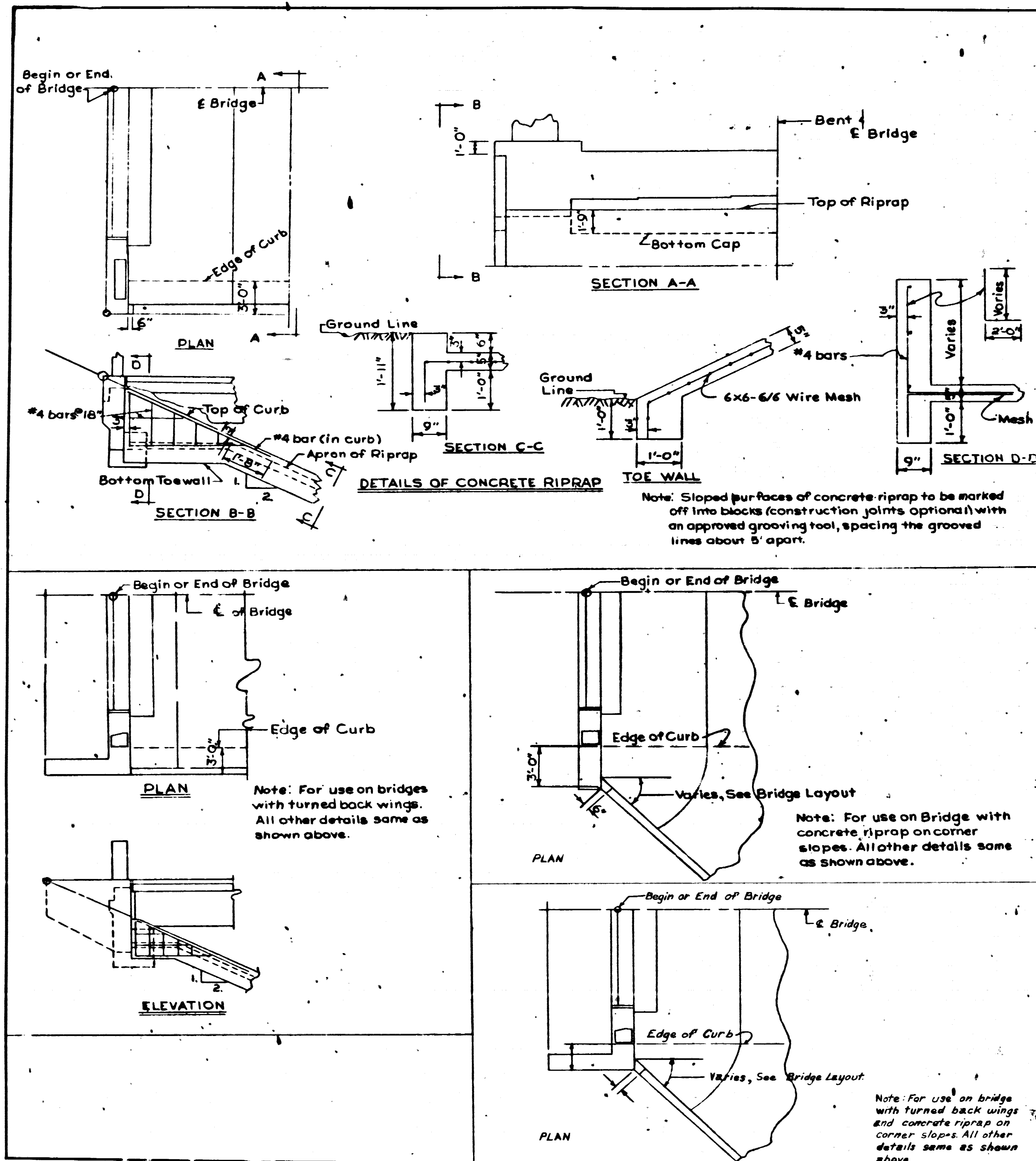
BAR	No.	Length	A	B	C	D	Pin
5901	52	19'-8"	10'-3 1/2"	2'-6"	6'-9 3/4"	-	2"
5902	112	8'-8"	2'-6"	12'-6 3/4"	-	-	2"
5903	48	30'-3"	-	-	-	-	5 1/2"
5904	78	3'-7"	6"	9"	1'-2"	-	2"
5905	52	8'-11"	-	-	-	-	5 1/2"
5906	63	47'-4"	46'-2"	5"	-	-	3 3/8"
5907	78	46'-2"	-	-	-	-	5 1/2"
5908	400	7'-0" to 7'-2"	2'-4"	4'-10" to 4'-8"	-	-	2 3/8"
5909	400	7'-0" to 7'-2"	2'-4"	10'-10" to 11'-3"	-	-	2 3/8"
5910	4	7'-4"	2'-4"	11'-3"	-	-	2 3/8"
5911	4	7'-4"	2'-4"	12'-0"	-	-	2 3/8"
5912	400	7'-0" to 7'-2"	2'-4"	10'-10" to 11'-3"	-	-	2 3/8"
5913	400	7'-0" to 7'-2"	2'-4"	11'-3"	-	-	2 3/8"
5914	400	7'-0" to 7'-2"	2'-4"	14'-3" to 14'-3"	-	-	2 3/8"
5915	400	7'-0" to 7'-2"	2'-4"	14'-3" to 14'-3"	-	-	2 3/8"
5916	2	7'-8"	2'-4"	1'-2 3/8"	-	-	2 3/8"
5917	252	4'-0"	-	-	-	-	5 1/2"
5918	324	5'-6"	4'-0"	1'-5"	4'-8"	-	3 3/8"
5919	52	13'-0"	-	-	-	-	5 1/2"
5920	52	18'-2"	-	-	-	-	5 1/2"
5921	52	10'-3"	-	-	-	-	5 1/2"
5922	104	13'-4"	10'-7"	2'-9"	-	-	4"
5923	52	41'-3"	-	-	-	-	5 1/2"
5924	52	39'-9"	-	-	-	-	5 1/2"
5925	28	31'-6"	7'-0"	17'-6"	-	-	4 3/8"
5926	52	13'-9"	11'-5"	4'-4"	-	-	4 3/8"
5927	16	46'-2"	-	-	-	-	5 1/2"
5928	8	48'-0"	46'-2"	8"	-	-	6"
5929	16	40'-2"	-	-	-	-	5 1/2"
5930	4	46'-2"	-	-	-	-	5 1/2"
5931	104	16'-6"	-	-	-	-	5 1/2"
5932	52	26'-4"	4'-3 3/8"	17'-6"	-	-	6"
5933	26	16'-0"	-	-	-	-	5 1/2"
5934	18	48'-8"	46'-2"	10"	-	-	9"
5935	8	11'-5"	-	-	-	-	5 1/2"
5936	4	36'-2"	-	-	-	-	5 1/2"
5937	4	60'-0"	-	-	-	-	5 1/2"
5938	8	16'-6"	11'-5"	5'-1"	-	-	6"
5939	8	25'-0"	11'-5"	11'-0 3/8"	2'-6"	-	6"
5940	4	42'-7"	2'-6"	10'-0 3/8"	17'-6"	-	6"
5941	4	24'-0"	3'-3"	17'-6"	-	-	6"
5942	56	31'-6"	11'-5"	11'-0 3/8"	2'-6"	6'-6 3/8"	4 3/8"
5943	38	5'-6"	2'-6"	1'-6 3/8"	-	-	2"

Note: For R.C. Slab Unit General Notes see dwg. no. 18145

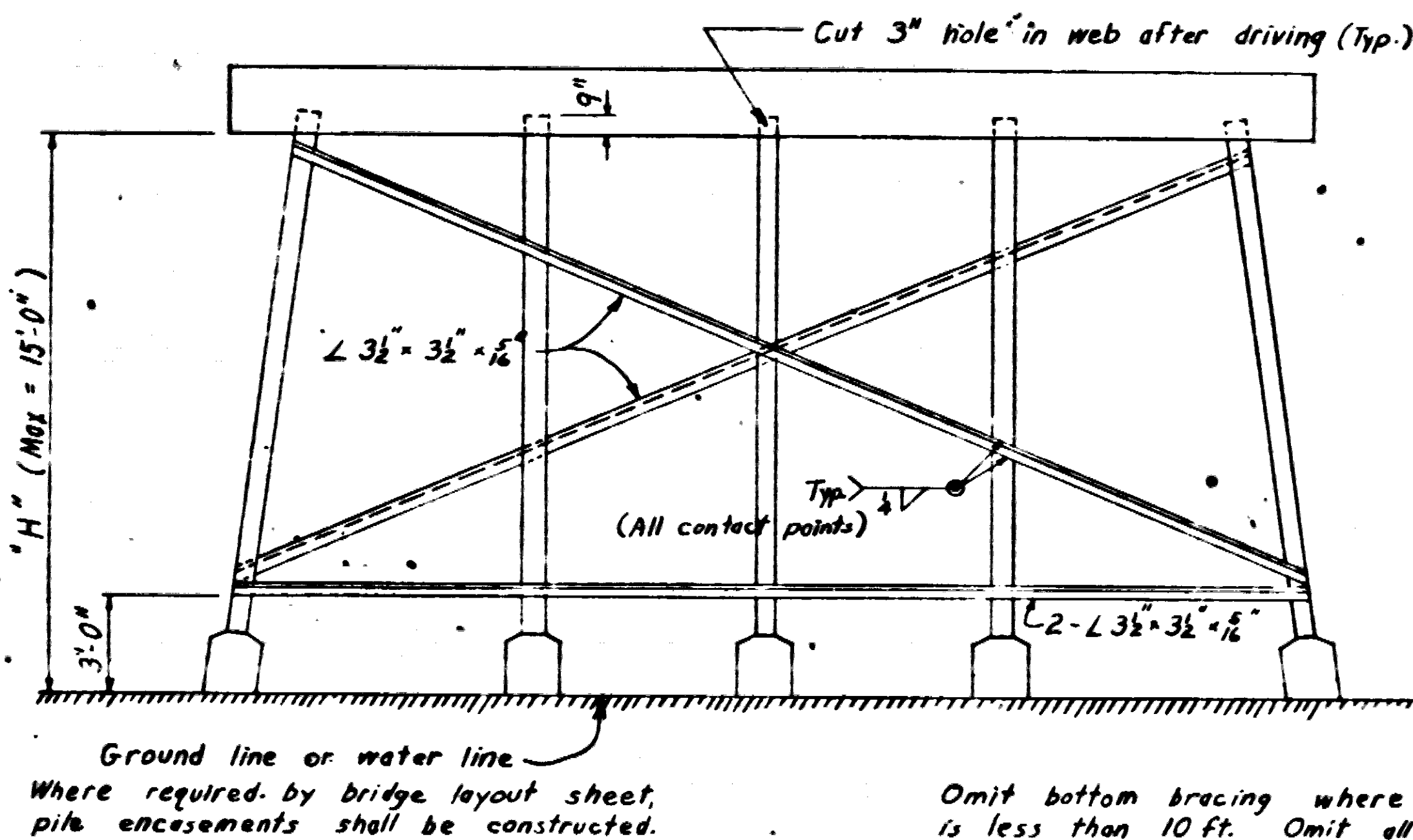


SHEET 2 OF 2  
DETAILS OF 87'-11"  
CONTINUOUS R.C. SLAB UNIT  
BRIDGE OVER SPRING CREEK  
SPRING CREEK BRIDGE (SPRINGDALE)  
WASHINGTON COUNTY  
ROUTE 383 SEC. 1  
ARKANSAS STATE HIGHWAY COMMISSION  
LITTLE ROCK, ARK.  
DRAWN BY: J.P.S. DATE: 2-12-73  
TRACED BY: DATE: 7-2-73  
CHECKED BY: DATE: 7-2-73  
BRIDGE NO. 5519 DRAWING NO. 18147





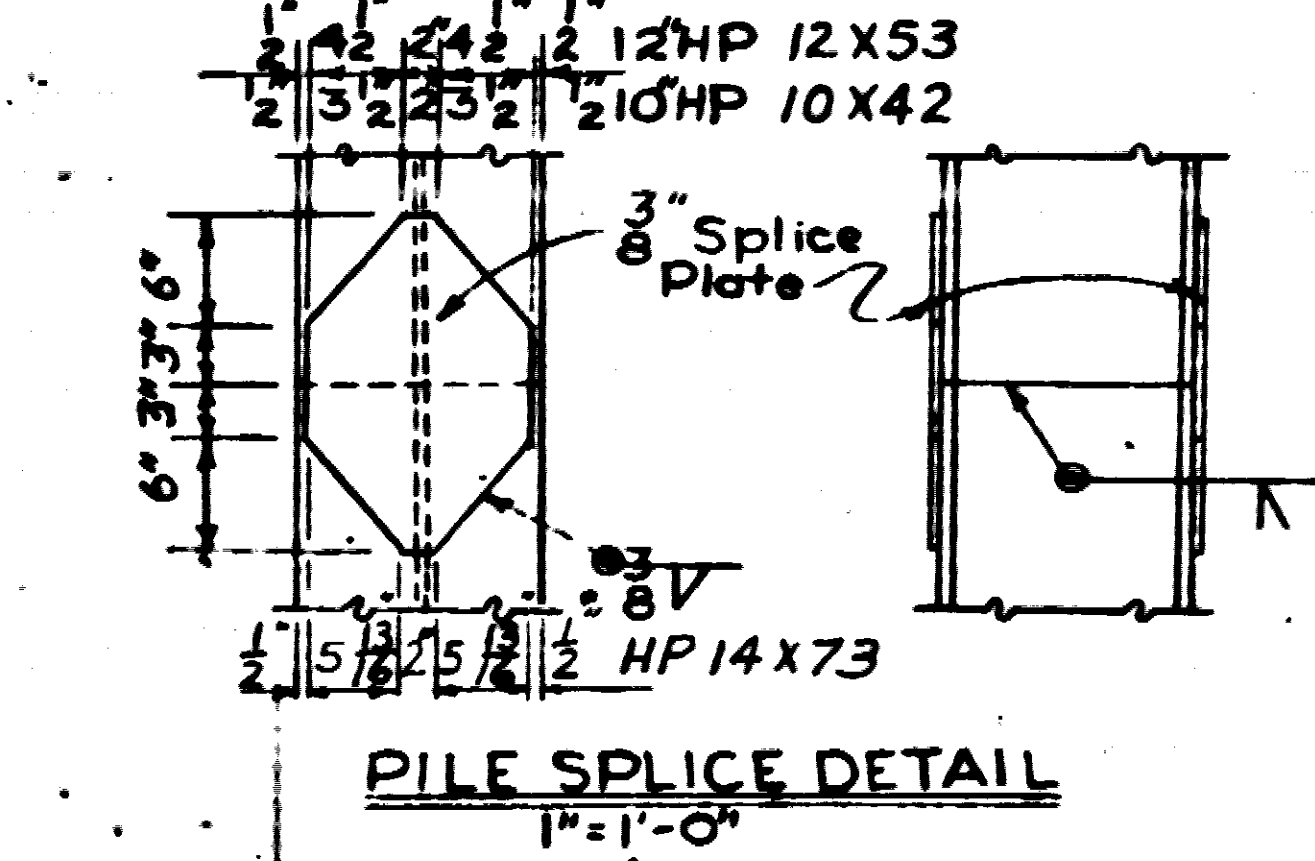
All bracing shall be cut and welded in the field. Each brace shall be furnished in one piece. Payment shall be made under item 807.



TYPICAL BRACING FOR INT. STEEL PILE BENTS

No Scale

Note: Omit Bracing where Pile Encasement is Extended to Bottom of Bent Cap.



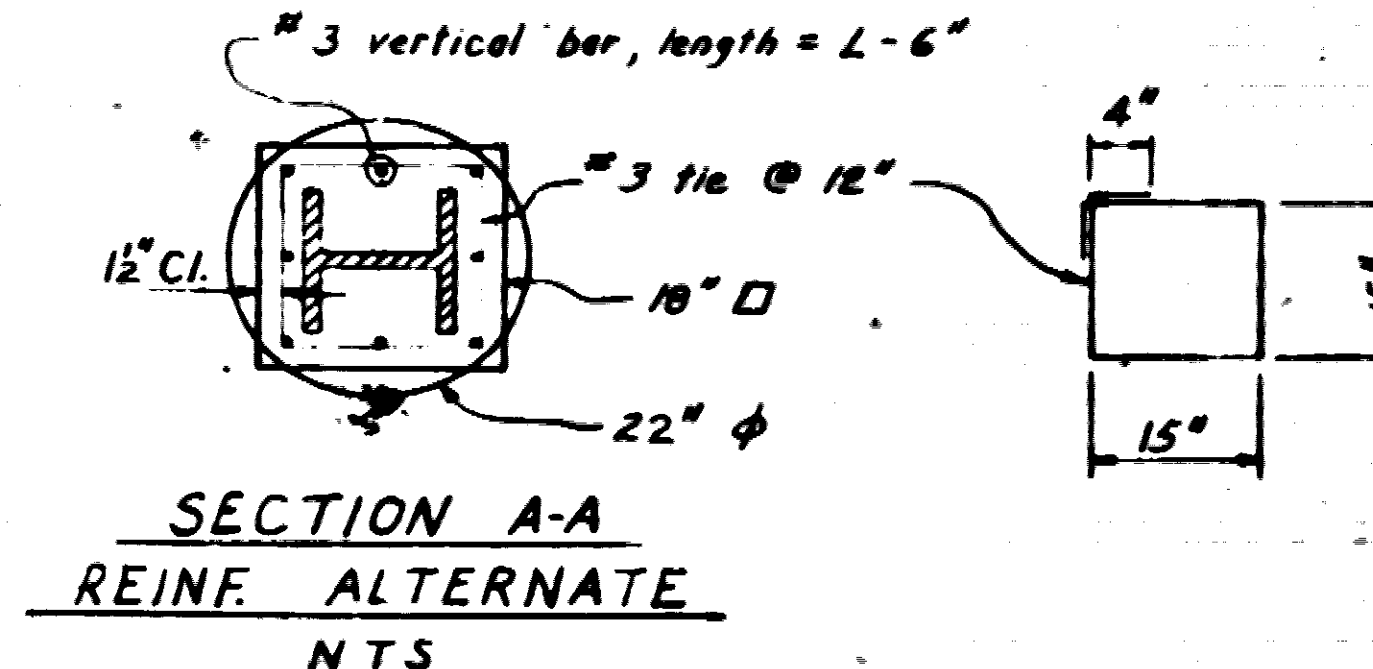
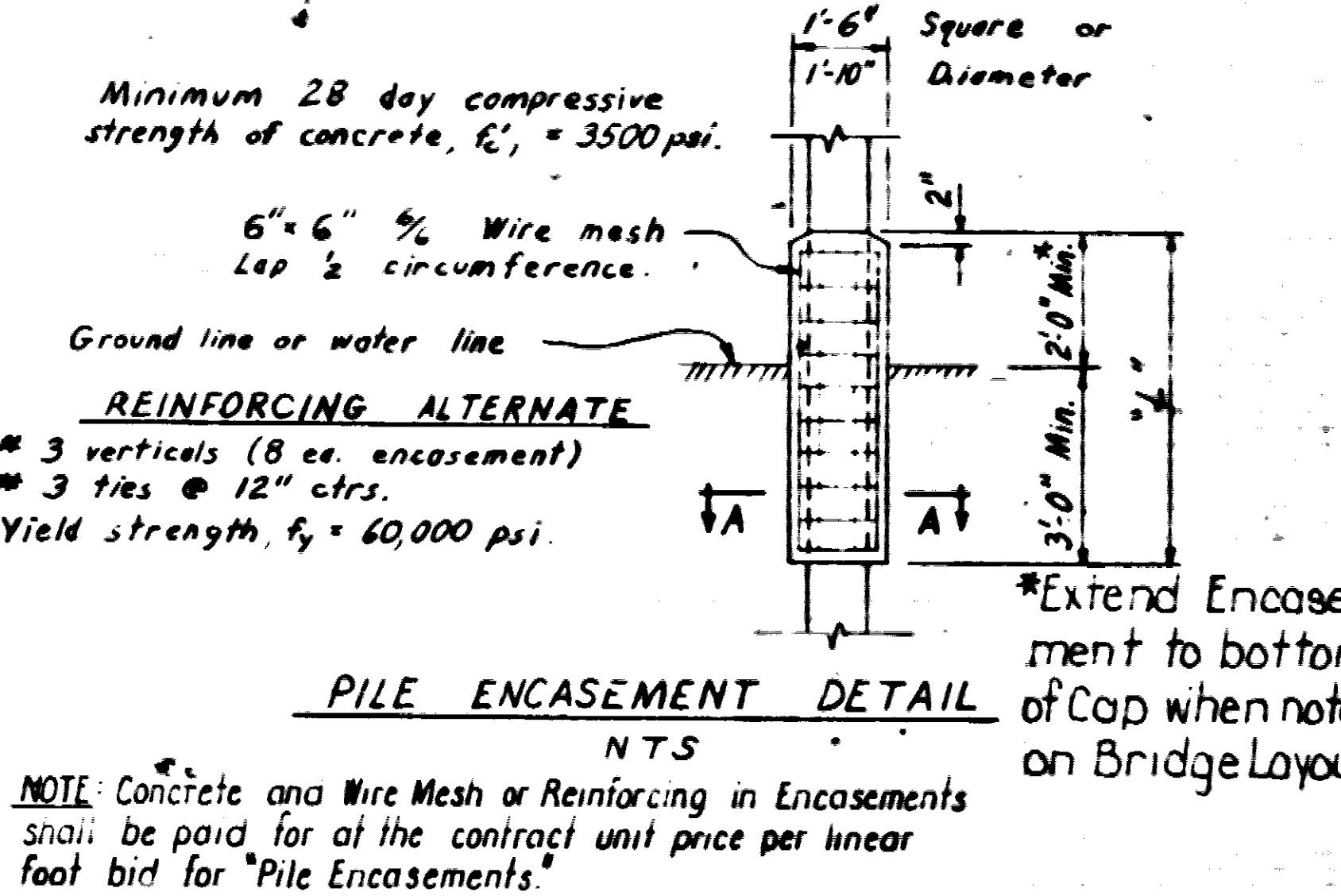
The Contractor may for his convenience and at his own expense provide as many as three splices per pile for steel bearing piling. Minimum spacing between splices shall be 5 feet.

NOTE: Drawing Adapted From Drawing No. 14995, With Detail Drawing Concrete Riprap on Corner Slopes L.E.G. 2/16/72

Revised 4-21-76 Added HP14X73 Pile. GVA  
Revised bracing detail, added encasement details. 7-29-77 MEC  
Revised encasement dimensions for 12" piles 12-5-77 MEC  
Added Encasement + Bracing Notes-7 May 81 Kdh.  
Revised Pile Encasement payment Note. 22 Feb 82 KMG

BRIDGE ENGINEER

DATE	REVISION	DATE	REVISION	DATE	REVISION	DATE	REVISION	FED. ROAD NO.	STATE	FED. AID PROJ. NO.	FISCAL YEAR	SHEET NO.	TOTAL SHEETS
2/15/72		10/25/76		12-5-77		500-10-577		6	ARK.			34	
4-21-76	140-4-215	5-7-81	721-5-141										
9-24-77	109-10-679	2-22-82	567-2-2530										



Note: Steel Pile Tip Reinforcing will not be paid for directly, but shall be considered subsidiary to the item of "Steel Bearing Piling".

REINFORCING DETAIL FOR STEEL PILE TIP

1'-0"

DETAILS OF CONCRETE RIPRAP AND MISC. DETAILS OF STEEL PILING  
ROUTE SEC.  
ARKANSAS STATE HIGHWAY COMMISSION  
LITTLE ROCK, ARK.

DRAWN BY: J.L. DATE: 6-6-69  
TRACED BY: DATE: 6-6-69  
CHECKED: EMH DATE: 6-24-68  
BRIDGE NO. SCALE: NO SCALE  
DRAWING NO. 14995A